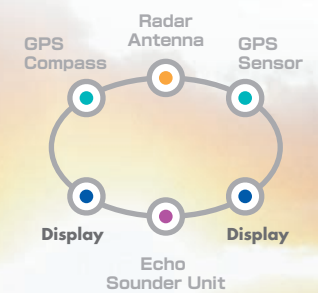


High Performance Navigation Network

K-Link System



Radar Plotter Model	MDP-621	MDP-641	MDP-640	MDP-1241	MDP-1240	MDP-1260	MDP-1210
Display	RGD-600			RGD-120			
Display size / type	7-inch Color LCD			10.4-inch Color LCD			
Display resolution	480 X 640 Pixel			640 X 480 Pixel			
Antenna-scanner unit	RB714A	RB715A	RB716A	RB715A	RB716A	RB717A	RB718A
Antenna type	Radome	Radome	Open array	Radome	Open array	Open array	Open array
Antenna length	1.2 feet	2 feet	3 feet or 4 feet	2 feet	3 feet or 4 feet	4 feet or 6 feet	4 feet or 6 feet
Peak power output	2 kW	4 kW	4 kW	4 kW	4 kW	6 kW	12 kW
Range	0.125 to 24 nm	0.125 to 36 nm	0.125 to 48 nm	0.125 to 36 nm	0.125 to 48 nm	0.125 to 64 nm	0.125 to 72 nm
Chart	C-Map NT / NT+ / NT MAX			C-Map NT / NT+ / NT MAX			

Echo Sounder Unit	CVB-20
Output power	600 W / 1 kW
Frequency	50 / 200 kHz

• Design and specifications are subject to change without notice.

Safety precaution To ensure proper and safe use of the equipment, please carefully read and follow the instructions in the Operation Manual.

For details, please contact:

KODEN Kodan Electronics Co., Ltd.
 Tamagawa Office:
 2-13-24 Tamagawa, Ota-ku, Tokyo, 146-0095 Japan
 Tel: +81-3-3756-6501 Fax: +81-3-3756-6509
 Uenohara Office:
 5278 Uenohara, Uenohara-shi, Yamanashi, 409-0112 Japan
 Tel: +81-554-20-5860 Fax: +81-554-20-5875
 overseas@koden-electronics.co.jp
www.koden-electronics.co.jp

5 I F , - J O L O F U X P S L T Z T U F N F Y Q F S J E O D F

K-Link System

) J H I T Q F F E O F U X P S L T Z T U F N

K-LINK shares up to three displays, radar, GPS, GPS compass and echo sounder using Ethernet network protocol. The radar image can be overlaid on the chart.

Place displays in the cabin, upper decks, or wherever, and operate the system from any of these locations.

Each display is a leading-edge Koden device, equipped with an independent high-speed CPU. Waypoints, marks and events can be stored in each device's memory. Various data can be shared between displays.

Your life on the water is about to become even more fun and convenient!

& Y Q B O E B C M F

The K-LINK system expands to an all-in-one navigation system. The basic system consists of a radar-plotter display, choice of radar antenna and GPS sensor. You can expand the system with the addition of an echo sounder unit, GPS compass and you can add up to three displays. Choose the networking combination that best suits your vessel.

KGC-1

GPS Compass

RB714A / 715A / 716A / 717A / 718A

Radar Antenna

GPS-20A

GPS Sensor

CVB-20

Echo Sounder Unit

RGD-120

Display

RGD-600

Display

5 I J T J T X I B U N B L F T , - J O L T P H S F B U

Ù 7 B S J P V T * O G P S N B U J P O

Combined with C-Map NT MAX, various information such as current, port facilities is available.

Ù % V B M S B E B S T D S F F O

Display short range and long range in a dual-screen for simultaneous target capture. Gain, Anti-Sea Clutter, and Anti-Rain Clutter can be controlled individually.

Ù 4 F N J % S B E B S E J T Q M B Z

Stronger signals are displayed longer, and weaker signals shorter, making it possible to confirm signal strength at a glance. The Mercator-type grid system provides a display similar to real-time perspective vision, making it easier to see closer targets.

Ù # P U U P N [P P N

Zoom in on the bottom, maintaining the view of sea-floor topography as-is. This display is ideal for viewing schools of fish close to the bottom.